

Release Notes
DEPAROM-Client 5.07.00

The logo for DEPAROM features a semi-circle with a vertical line down the center. The right half of the semi-circle is filled with a red and yellow vertical stripe. The word "DEPAROM" is written in a bold, black, sans-serif font across the bottom of the semi-circle.

DEPAROM

Contents

1	INTRODUCTION	3
1.1	DESCRIPTION	3
1.2	AUDIENCE	3
1.3	HISTORY	3
2	GENERAL.....	4
2.1	COMPATIBILITY TO EARLIER SOFTWARE VERSIONS.....	4
2.2	SYSTEM REQUIREMENTS	4
3	LIST OF CHANGES	5
3.1	DISPLAY OF FULL-TEXT PDF-FILES	5
3.2	EXPLORER VIEW	6
3.3	AUTOMATIC PATENT REPORT CREATION	9
3.4	CHARTS.....	10
3.5	DOWNLOAD OF EMIS AND MAIN DRAWINGS	11
3.6	MAPPING KEYBOARD SHORTCUTS TO BATCH FILES EXPANDED	12
3.7	OPEN DEPAROM.INI FROM CLIENT	13
3.8	OPEN BATCH FILES FROM CLIENT	13
3.9	COMMAND LINE PARAMETERS CHANGED	14
3.10	SELECT ANNOTATION FIELDS SEPARATELY FOR TEMPLATE OUTPUT	14

1 Introduction

1.1 Description

This document describes the changes made to the DEPAROM-Client from versions 5.06.03 to 5.07.00.

1.2 Audience

This document is written for end users who want to install and use the new client version 5.07.00. It is also intended for Administrators who need to understand the changes to the configuration and installation.

1.3 History

Version	Date	Author(s)	Comments
0.1	24.04.2009	Tim Jagodzinski	Created
0.5	28.04.2009	Tim Jagodzinski	Completed (Review Status: open)
1.0	19.06.2009	Michael Kuß	Finalized

2 General

2.1 Compatibility to earlier Software Versions

This version of the DEPAROM-Client is compatible with previous versions down to version 5.06.03.

2.2 System Requirements

Version 5.07.00 requires Windows 2000, Windows XP, or Windows Vista operating systems.

In order to use the new **Chart Tool**, the .NET Library version 2 or later is necessary.

The installation program for .NET can be downloaded from the Microsoft web-site at <http://msdn.microsoft.com/netframework/>.

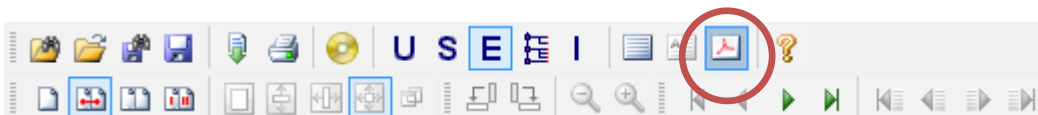
Adobe Reader version 8 or later is necessary to use the PDF View. Adobe Reader can be downloaded from <http://get.adobe.com/reader/>.


3 List of Changes

3.1 Display of full-text PDF-files

The DEPAROM-Client can display facsimiles from the TIFF files on the DVD. As of now it can also display the fulltext PDF files on the DVD. All viewing tools known from the standard facsimile view, except the scaling tools and rotate page to left/right and the zoom function, also work on the PDF view. Fulltext search as well as text and graphics copy and paste is added to PDF view.

The graphical user interface has been expanded with a set of icons which represent the added functionality as documented below. The next illustration shows the new icon highlighted:



Activate the PDF view with the new PDF-button . If the documents are viewed as facsimile or fulltext you can switch to the PDF view with this button.

You can change the default view to PDF in the main menu with the menu item "Tools" with the option "Options..." by selecting the option "Use PDF instead of facsimile if possible":

Use PDF instead of facsimile if possible.


DEPAROM utilizes the Adobe Reader to display PDF files. The view offers all tools also to be found in Adobe Reader. For questions concerning Adobe Reader please consult the Adobe Reader User Manual.

Navigating through PDF pages does not update the navigation bar at the bottom of DEPAROM-Client.

Displaying PDF/A files may not give expected results when using Adobe Reader 9 due to changes implemented in version 9 of Adobe Reader. Further information can be found at our information website <http://www.ipcrunch.de>.

3.2 Explorer View

In previous versions, the only way to get a set of documents for view was to perform a query. DEPAROM includes now a new search mode that enables you to navigate through a volume.

You can enable the explorer modus by selecting in the main main menu in the menu item "Query" the option "Explorer Mode" or in the tool bar  or with the keyboard shortcut <SHIFT> + <F7>.

The new mode introduces two new window, the "Document Explorer" showing the querydata in a hierarchical form and the "Document List" showing the documents that are associated with the selection in the "Document Explorer".

The window "Document Explorer" sports three GUI elements and the document tree.



"rebuild tree": Rebuilds the document tree. Depending on the size of the database this process may take time from seconds to several minutes.

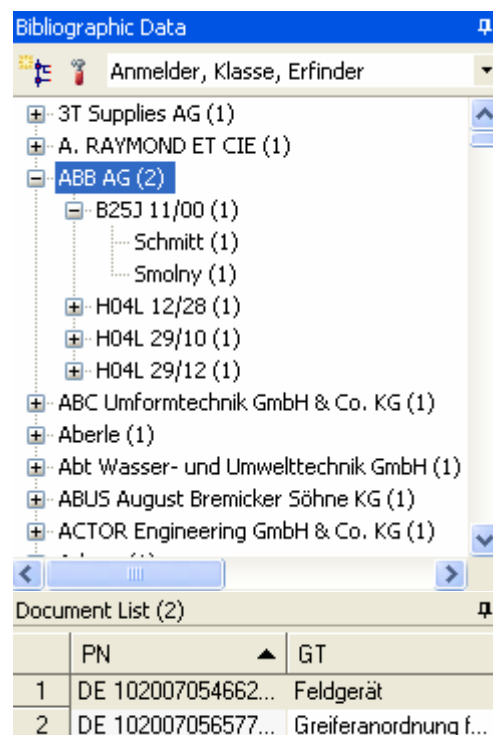


"View configure": Each view can have its own name to reveal its purpose.

"Current View": From this drop down box the user can select the desired view.

In this example the categories applicant (PA) and class (IC) and inventor (IN) are displayed in a tree structure. Displayed right of every entry in braces is the number of documents contained in the entry. You can see in this example that there are two patent documents registered to the applicant "ABB AG" and that the patent documents are associated with the classes "B25J 11/00", "H04L 12/28", "H04L 29/10", "H04 29/12" and that there are several inventors for every patent document.

The "Document List" displays the information from 2 documents. By double click with the mouse on one entry the document will be opened in DEPAROM.



The screenshot shows the 'Bibliographic Data' window with a tree view. The tree is expanded to show 'ABB AG (2)' with sub-entries for classes 'B25J 11/00 (1)', 'H04L 12/28 (1)', 'H04L 29/10 (1)', and 'H04L 29/12 (1)'. Below the tree is the 'Document List (2)' window, which contains a table with two columns: 'PN' and 'GT'.

	PN	GT
1	DE 102007054662...	Feldgerät
2	DE 102007056577...	Greiferanordnung f...

A new group type has been added to the possible Deparom.ini parameters:

```

[DocView0]
Name=Anmelder, Klasse, Erfinder
Index0=PA
Index1=IC
Index2=IN
Display0=PN
Display1=GT
    
```

Several DocViews can be defined, each in a separate group. Each has to be numbered beginning from zero and counting up ([DocView0] ... [DocView1] ... [DocView2] etc.).

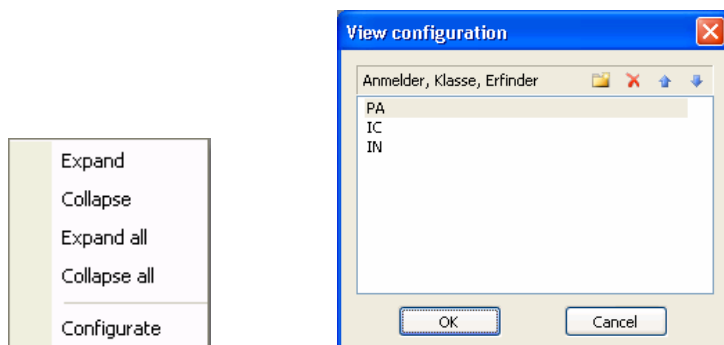
Name is displayed in the "Current View" dropdown box.

Index0-2 define the three bibliographic data fields used to structure the document tree. Each IndexN corresponds to the N'th level of the document tree.

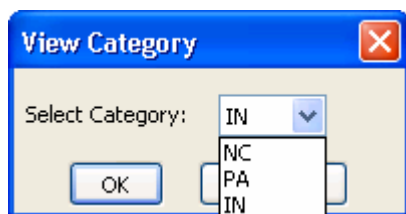
Display0-1 correspond to the bibliographic data fields displayed in the "Document List" window.


3.2.1 Explorer View Configuration

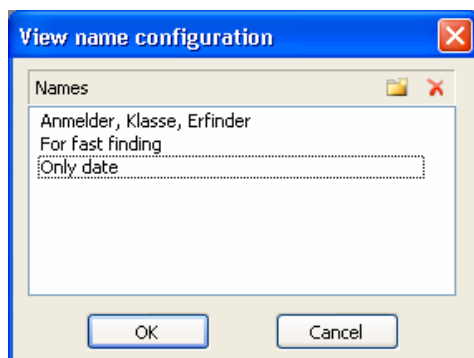
Categories used to structure the document tree can be freely configured. In the context menu (right click on document tree) the entry **Configure** can be found, which opens following dialog box:





Sequence of list entries can be changed (↑ and ↓), deleted (✖) or created (📁). Double clicking an entry opens a text field where the name of the entry can be changed. If you are uncertain which criteria to use you can use the “...” button ... to get a list of possible bibliographic data fields:



By clicking the tool symbol  in the explorer window you can manipulate the available explorer views. For fast switching between the views you can define different names here:



You may add entries using the  button, rename (double click on entry) or delete entries . Views can be configured as described above.

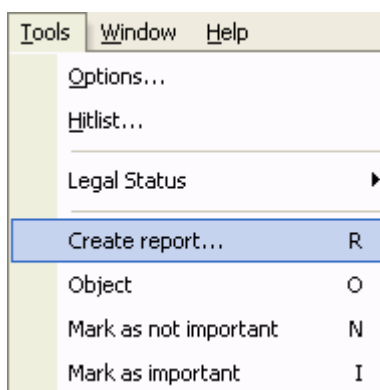
3.3 Automatic patent report creation

This feature allows to create a patent report in Open Document Format through use of the batch functionality of the DEPAROM-Client. The report includes patent documents based on a search query and is compiled following the format of a given template and usually includes main drawing, annotations and the most important bibliographic data fields. The resulting .odt file can be viewed and edited with OpenOffice.org or MS Word if the ODF-Plugin from Sun Microsystems is installed. As of MS Word 2007 with servicepack 2 .odt files are supported natively.

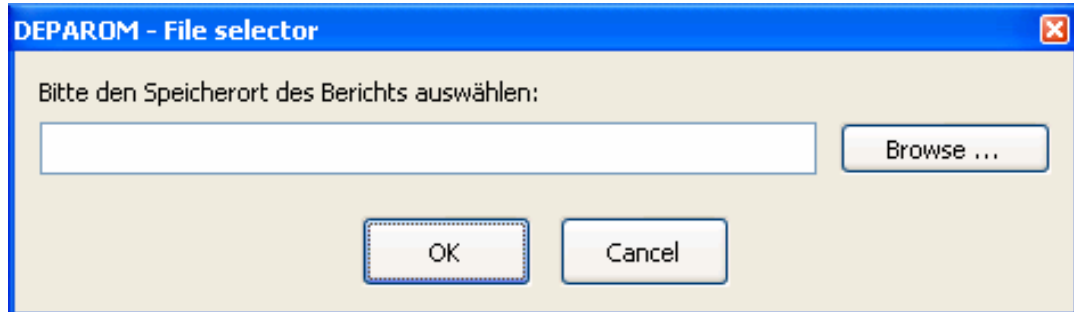
The following files and directories were added to the DEPAROM-Client installation:

Batch\CreateReport.txt	New standard batch
Script\report.vbs	Tools for creating OpenOffice documents
Script\zip.exe	
Script\convert.exe	
template\ bericht.template\	Templatefiles for preparing data Template for creating .odt files

To create a patent report, a hitlist has to be prepared which contains the desired documents to be compiled. When this has been done, the patent report can be created by selecting "Create report..." from the "Tools" menu entry.



The batch file then asks for the filepath to save the report to. After entering all data the report is being compiled and saved.



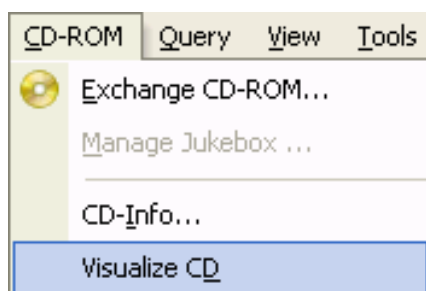
The procedure may take a few seconds up to several minutes depending on how many documents are compiled into the report.

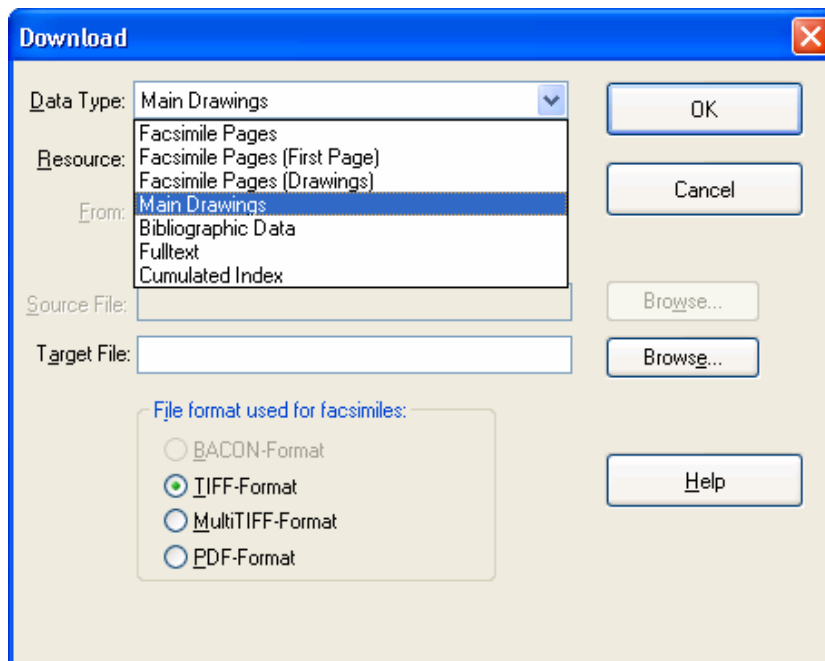
3.4 Charts

DEPAROM is now able to visualize the contents of the DEPAROM DVDs. Several types of charts and graphs are supported as well as different sources of data.

The commandline tool DepaChart.exe (with accompanying DepaChart.bin) has been added to the Client installation path.

By selecting the menu item "CD-ROM" and the option "Visualize CD" the current volume can be visualized:





EMIs can also be downloaded using the batch functionality of the Client. To do this use “z” as DataType/Datenart. Only main drawings can be downloaded as well. Add “Subtype=h” if this behaviour is desired.

Example:

```

Download
  Datatype = z
  Subtype = h
  Source = h
  Srcfile = C:\hitlist.rst
  Targetfile = C:\Pictures.log
End
    
```

3.6 Mapping keyboard shortcuts to batch files expanded

Batch files can be mapped to keyboard shortcuts through use of the commands GermanTitle/EnglishTitle. Until now only letters and digits on a keyboard’s “main area” could be mapped. Now also keys on the num-pad except of NUM-Lock and ENTER can be mapped.

All new keys on the num pad can be mapped like in the following example:

```
GermanTitle = Nächstes Dokument;NUM-*  
EnglishTitle = Next Document;NUM-3
```

Remember: Hotkeys for batch files only work from the document view NOT from the search dialogs.

Documentation of the batch mode can be found in the DEPAROM User Manual.

3.7 Open DEPAROM.ini from Client

For easier access, the DEPAROM.INI file can be opened directly from the client.

The “About DEPAROM...” dialogue from the “Help” menu entry has been expanded with a text box and “Open” button. The text box shows the file path to the currently used DEPAROM.INI file and the “Open” button opens the file in the standard text editor application.



3.8 Open batch files from Client

For easier access, especially when bugfixing or customizing, batch files shown in the “Tools” dialog can now be opened from the Client in the standard text editor application.

Functionality has been added to the "Tools" dialog to open listed batch files in the standard text editor application. Hold the CTRL-key while clicking on a listed batch file and it will open in the standard text editor application.

3.9 Command line parameters changed

Command line parameters have been changed to make use of batch files more comfortable.

Until now, if a batch file was launched from command line through use of parameter `-c`, always a new instance of DEPAROM-Client was launched, even if there was already one running. Now the batch file is executed in an already running instance of DEPAROM-Client if there is any.

A new parameter `-m` has been added to start the DEPAROM-Client minimized. This reduces desktop disturbance when running a large number of batch files in succession.

3.10 Select annotation fields separately for template output

When downloading bibliographic data in templated format, it is now possible to output only selected annotation fields. It is also possible to select fields by user group.

Until now, annotations could only be output in templates as a block, consisting of all text fields and check boxes. Now it is possible to separately select each field and by group if so desired.

To select a specific annotation field use place holders in a template as follows:

```
█ %%AM:AnnotationField%%
```

"AnnotationField" specifies the exact name of the desired text field or check box.

To select annotation fields by user group use place holders in a template as follows:

```
█ %%AM:AnnotationField:GroupName%%
```

"GroupName" specifies the exact name of the desired user group in the NoticePlusAdminmodule.

Editor

Deutsches
Patent- und Markenamt



Software, Production and Sales



Bundesdruckerei GmbH
Oranienstrasse 91 · 10969 Berlin
Hotline
Service +49 (030) 25 98-13 07
Telefax +49 (030) 25 98-14 86
e-mail: infovertrieb15@bdr.de